

4-H



WAY

Cooperative Extension, 1655 S. Main
Yreka, CA 96097

530-842-2711
<http://cesiskiyou.ucdavis.edu>

Calendar 2006

February

- 4 CSU, Chico Swine Day
- 9 Horse Leaders Meeting-6pm
- 11 Presentation/Demonstration Workshop
- 18 CSU, Chico Beef Day
- 20 4-H Office Closed
- 25 CSU, Chico Sheep & Goat Day

March

- 10 Statewide Postal Shoot Entries-Due
- 14 Leader's Council Mtg.-7pm
- 18 County Presentation Day
- 19 Horse Field Day
- 31 4-H Office Closed

April

- 1 Rabbit Field Day & Show
- 3 Siskiyou 4-H Scholarships Due
- 7-8 Youth Arts Festival/Home Ec. Field Day
- 22 Hippology Contest
- 22 Sectional Presentation Day-Lassen Co.
- 30 Archery Shoot (Tentative Date)

May

- 6-7 4-H Horse Show
- 27 State Presentation Day & Fashion Revue
- 29 4-H Office Closed

June

- 13 Leader's Council Mtg.-7pm
- 16-18 4-H Camp
- 23-27 California Focus

July

- 4 4-H Office Closed
- 8 Pre-Fair
- 10 State Record Books Due
- 15 Fashion Revue

August

- 6 4-H Horse Show (Fair Show)
- 9-13 Siskiyou Golden Fair
- 10-13 4-H State Leadership Conference

September

- 4 4-H Office Closed
- 7-10 Tulelake Butte Valley Fair
- 20 County Record Book Deadline

Scholarship Availability

The Siskiyou County 4-H Leader's Council is offering three educational scholarships for members who will be graduating during the current school year from a public, private or home school in Siskiyou County. Applicants must be a current Siskiyou County 4-H member with at least 3 years in the program and must have plans to continue their education either at a college or vocational/trade school. Application deadline is **April 3rd**. All eligible members should receive an application in the mail. Please contact the 4-H Office if you need further information.

Presentation/Demonstration Workshops

In an effort to help members discover their public speaking and demonstration skills, a special workshop and training has been scheduled for **February 11th** at 9:00am. The training will be held at Grenada Elementary School. Members will be able to find new ideas for presentations and will have the opportunity to see different presentation skills at work.

CSU, Chico Swine Day

Swine Day (**February 4th**) is put on by the students and staff of the Swine Unit at the University Farm. The day consists of an educational morning program with workshops on nutrition, showmanship, selection and more. **NO SALE** this year. For more information contact the Swine Unit at (530) 898-6025.



CSU, Chico Beef Day

Beef Day (**February 18th**) is an annual event sponsored by the CSU Chico Young Cattlemen's Association, the CSU Chico College of Agriculture, University of California Cooperative Extension, and the California Beef Council Improvement Association. The program is geared towards adult beef cattle producers with educational workshops and forums on topics of producer interest. For more information please contact Dr. Dave Daley or Kasey DeAtley at (530) 898-4539.

CSU, Chico Sheep & Goat Day

Sheep and Goat Day (**February 25th**) is sponsored by the Sheep Unit at the Agriculture Teaching and Research Center. The event is designed to educate youth exhibitors about their project lambs and goats. The morning program includes workshops on selection, nutrition, and showmanship. In the afternoon the Sheep Unit will auction off approximately 60 top quality project lambs and 20 local project goats. These are lambs and goats that will be ideal for May and June fairs. For more information, please contact the Sheep Unit at 898-6024.

Japanese Exchange

In 2006, California will be sending a delegation of 4-H members to Japan for a one-month exchange. The dates of the exchange are July 12 - August 10. There is also a 3 week Nihongo Program directly before the month-long host family program. Nihongo provides an intensive Japanese language program in the Tokyo area. A volunteer leader is being sought to chaperone the delegation. The chaperone is selected on the national level and is interviewed by WorldWise Exchange Services. Chaperone fees are covered by the program.

California Focus

California Focus is a unique 4-H Citizenship educational experience that combines hands-on participation in workshops, debates, and simulations with outstanding speakers and visits to historical, cultural, and governmental sites. California's capital city, Sacramento, becomes a "living classroom" for this five-day, action packed adventure. Enrollment is open to all adult 4-H leaders and to youth members that have completed the 8th grade. California Focus will be held **June 23rd-27th, 2006**. Registration and Financial aid forms are available at the 4-H Office. Financial aid forms must be completed by **December 1st**.



County Presentation Day March 18th Scott Valley Jr. High

Schedule

9:15am Judges and Room Monitor Orientation
9:30am Welcome/Skits
10:00am Presentations (awards presented in rooms)

Registration materials are available in this copy of the 4-H Way. If you need information about creating a presentation or what is required for competition in a specific presentation category please visit the following link at:

<http://ca4h.org/leadership/spd/4HPresentationManual-3.doc>

Hi 4-H News-by Alyssa Schmidt

First "Guests" at the Charlie Byrd Youth Correctional Center

The Hi-4-H members were the first "guests" at the CBYCC on December 29th. The members helped the facilities staff on timeliness, routine, movement and operation of doors. The staff also needed to know where to stand to see all guests at all times.

The unit that the Hi-4-H members helped in was unit "A". The unit consisted of a main room, school room, covered outside recreation gym and a grass recreation area. Sleeping quarters (cells), which were located in the main room, had a cement block bed and a very small cushion on it, and had a half bathroom. Main room doubled as the dining room too. Dining room furniture was bolted down tables and stools. Hi-4-H members had their food brought to them, same as the other guests. The Hi-4-H members learned a lot about how the guests at the Charlie Byrd Youth Correctional Center live during their stay.

Hi-4-H members that participated in the event were: Will Cook, Kaitlin Conklin and Ethan Kuck of Montague 4-H, Janice Bridwell of Gazelle 4-H, Clay Jackson of Grenada 4-H, and Alyssa Schmidt, Philomena Walsh and Rita Walsh of River Valley 4-H. Guests who participated were Carolyn Bridwell and Ben Cook.

California State 4-H Updates/Info

The State 4-H Office and the National 4-H Supply Service are proud to announce that your orders from Supply Service can now also benefit the California 4-H Youth Development Program! California is the first state to pilot the **new 4-H Fair Share Program**, which will return 10% of any merchandise ordered on the web to California 4-H. To ensure that your order will be counted towards the Fair Share total, **click through this special link when placing an order:** <http://www.4-hmall.org/California/>

The **4-H National Livestock Judging Contest Qualifier** will be held at California State University, Fresno on April 22, 2006. The winning senior team is eligible to represent California at the National 4-H Livestock Judging Contest in Kentucky. A county may enter more than one livestock judging team. A registration form and the rules and regulations are available at:

<http://ca4h.org/projresource/livestock/index.asp>.

Mail your registration and entry fee, postmarked no later than **February 1, 2006**, to the Madera County 4-H Office, 328 Madera Avenue, Madera, CA 93637. No late registrations will be accepted.

2006-2007 4-H State Ambassador applications are now available online. 4-H State Ambassadors are selected to represent the California 4-H Youth Development Program, plan the State Leadership Conference, and complete a service project. More information is available at

<http://ca4h.org/leadership/ambassador/>.

Applications are due **March 31, 2006**

For Clubs/Groups: In recognition of National 4-H Week, ESRI has announced it will offer a software grant program, **4-H GIS GPS Community Mapping**, for 4-H clubs in 2006. ESRI will award grants of GIS club software and learning resources to 4-H groups who propose conducting community mapping projects using GIS (Geographic Information Systems) and GPS (Global Positioning Systems) technologies. To receive notification of the application and selection guidelines by e-mail, please register at <http://www.esri.com/grants/>



and select 4-H grant opportunities. If you have questions, email: 4-HIS_external@esri.com. **Proposals for ESRI GIS Software Grants will be accepted from January 1 through March 30, 2006.**

The **2006 State 4-H Presentation Day** will be held on May 28, 2006 at UC Davis. Category descriptions and evaluation rubrics are available to download at:

<http://ca4h.org/leadership/spd/>. Participants must earn a gold medal at a sectional competition to be eligible. 4-H members who "**Speak Out for Military Kids**" at their 4-H Presentation Day will be presented a special award on behalf of the U.S. military (for more information, click <http://ca4h.org/leadership/spd/SOMK.pdf>). Registration deadline is **May 22, 2006**.

The **4-H Shooting Sports Trainer Certification Workshop for Rifle** will be held **February 18-19, 2006**. The training will be held at the True Sportsman's Club in Ione (Amador County). Upon completion of this course, participants will be certified as a 4-H shooting sports trainer and volunteer leader in the rifle discipline. Participants must attend both days of training. For more information, contact John Borba at (661) 868-6216 or jaborba@ucdavis.edu

Save the date! The California 4-H Camping Task Force will host its **first Camp Conference May 5-7, 2006** in Northern California. The weekend agenda provides rich information on camp program ideas; opportunities for certifications in shooting sports, food safety and ropes course; in-depth training on environmental education curriculum; and the release of the new Camp Risk Management Workbook. Youth, volunteers and staff involved in 4-H resident, day, and weekend camp programs are encouraged to attend. A second training in Southern California will take place in Fall 2006. For more information, contact Marianne Bird at (916) 875-6811 or mbird@ucdavis.edu

For Youth: 4-H statewide scholarship information and applications are now available. High school seniors and those in college are eligible to apply. Scholarships are available in a number of various criteria and award amounts. Scholarship applications are due **April 30, 2006** and available at: <http://ca4h.org/4hresource/ir/index.asp>

The UC Davis Collegiate 4-H Club is pleased to present "**4-H You See Davis Days**" for high school students on April 20-22, 2006. This three-day, activity-filled event is an opportunity for participants to experience college life at UC Davis. Registration forms are due **March 20, 2006** and may be found at:

<http://clubs.ca4h.org/collegiate4h/ucd/ysddays2006.htm>.

For more information, contact Sara Leisgang at (408) 921-4201 or sbleisgang@ucdavis.edu

**Siskiyou County Presentation Day Parent/Teen/Leader
HELPER
Form**

Name _____ Club _____

Category where you would like to help: (check spaces)

___ JUDGE - Adults and 4-H'ers 9th grade and above who have received a gold at regional

___ ROOM COORDINATOR - Must be 9th grade or above

___ OPERATIONS ASSISTANT -Setup, registration, clean up

___ TABULATION

We need three (3) adult and/or teen judges and one (1) Room Coordinator for each room. Use this opportunity to become a better leader and coach for presentations in the future. We will begin orientation at 9:15 and reduce or increase the number of rooms depending on the number of judges we have at that time.

Please return forms to the 4-H Office by March 6th.

I appreciate your help in advance—Thank you.

Siskiyou County Presentation Day Registration Form

CATEGORY: Please check one

___ Speech, Impromptu	
___ Demonstration, individual	___ Table Top or Free Standing Display
___ Demonstration, team	___ Video Presentation/Power Point
___ Speech, Prepared	___ Share The Fun

Name _____ Age _____ Grade _____ Club _____

Name _____ Age _____ Grade _____ Club _____
(Team member)

Number of members in skit: _____

Title (be creative) _____

Is a live animal a part of the presentation? (circle your answer) YES NO

Is there anything special about the room setup for your presentation or skit that we need to know?

HOME ECONOMICS FIELD DAY



WHEN: April 8, 2006

WHERE: Siskiyou Golden Fairgrounds, Winema Hall

EVENT SCHEDULE: 9:00-9:15am Registration/Welcome
9:15-11:30am Workshops and Judging of Entries
10:45-11:30am Bake-Off Contest and Judging
11:30-11:45am Presentation of Awards
11:45am Lunch (Potluck-Bring a Dish to Share)

EVENT THEME: A World of Taste

ENTRY FORM FOR YOUTH OR ADULT

Entry forms must be turned into the 4-H office no later than 5:00pm on March 30, 2006. (Our office will be closed on March 31, 2006.) *Volunteer Leaders may enter a bread, salad, or an appetizer/finger food. Special awards will be available and entries will be shared for potluck.*

4-H exhibitors can either enter sewing items in divisions 5 or 7 of the Youth Arts Festival, OR in the in Home Ec Field Day. The same item cannot be entered in both events.

Name: _____ Age: _____

4-H Club: _____ Grade: _____

Please mark an X next to categories you would like to enter:

___ *Appetizers/Finger foods (Open to youth and adults.)

___ **Bake-off competition** (Bring your favorite electric skillet recipe and put your cooking talents to the test.

Contestants need to provide their own electric skillet and extension cord. Participants will have 35 minutes to prepare their dish. They will be judged on cooking ability and kitchen safety techniques as well as the finished product. Participants should bring all items needed to prepare the meal as well as a tray or plate to serve the finished product with. No portion of the cooking should be done in advance.)

___ *Bread (Open to youth and adults.)

___ *Salad (Open to youth and adults.)

___ **Decorated Cake** (Remember you should try to incorporate the theme, *A World of Taste*.)

___ **Other Decorated Foods**

___ **Dessert-in-a-jar** (Must include dessert ingredients in jar, recipe and pre-made sample for judging.)

___ **Non-wearable sewn item**

___ **Quilts**

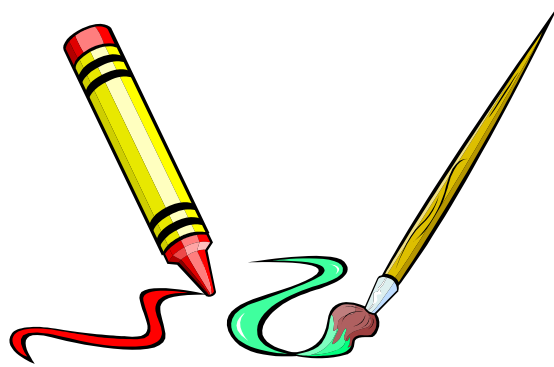
___ **Theme Basket-Sewing** (Must include at least one homemade sewn item.)

___ **Theme Basket-Cooking** (Must include at least one homemade food item.)

___ **Table Setting** (Decorations should show a theme of your choice. Members need to furnish their own card table. All tables need to be set for one, dishes for main course only, glass for all courses and silver for all courses except dessert. Menu with theme must be furnished for display on the table. This information may be submitted on a card neatly lettered or typed.)

SISKIYOU COUNTY 4-H PRESENTS THE 6TH ANNUAL

YOUTH ARTS FESTIVAL



@ **Looking for a chance to display your artwork?**

@ **Interested in learning new things through free art workshops?**

If so, you are invited to participate in the 2006 Youth Arts Festival. Any Siskiyou County Youth grades K-12 can enter! Every item entered will receive a ribbon award!

Ask your school's art teacher for more information on how you can enter, or you can call the 4-H Office at 842-2711.

WHEN: Entries are due Friday, April 7, 2006 between 3pm-6pm
Art exhibit open Saturday, April 8, 2006 from 11am-3pm
Workshops from 11:30am-3pm

WHERE: Siskiyou Golden Fairgrounds, Floral Building



Youth Arts Festival Registration Form

Exhibits accepted on April 7th (only 3pm-6pm)
Exhibits open for review on April 8th (11am-3pm)
Workshops begin April 8th (11:30am-3pm)

NAME: _____

SCHOOL: _____ AGE: _____ GRADE: _____

4-H CLUB (IF ENROLLED ONLY): _____

Please fill in the Division and Class number along with a description of the item. 4-H members may enter items in the 4-H category by checking the box indicated. All other entries should be indicated by checking the school category.

*****LIMIT OF 2 ITEMS PER EXHIBITOR, PER DIVISION*****

DIVISION	CLASS	DESCRIPTION	SCHOOL	4-H CLUB (IF ENROLLED)

Exhibitor Signature _____

Teacher/Parent or Guardian Signature _____

Please have entry form completed when you deliver exhibits to Fairgrounds.
Exhibits will only be accepted on April 7th from 3-6pm unless previous arrangements have been made
with Jacki Zediker at 842-2711.

Please make copies of entry form as needed.

Youth Arts Festival

Sponsored by Siskiyou County 4-H

Open to all Siskiyou County Youth grades Kindergarten thru 12th grade!

****4-H exhibitors only**:**

You can either enter sewing items in divisions 5 or 7 of the Youth Arts Festival, or in Home Ec Field Day, NOT both!

Exhibits accepted on April 7th (only 3pm-6pm)

Exhibits open for review on April 8th (11am-3pm)

People's Choice Awards: During the viewing of exhibits, the public will be able to purchase \$0.75 ribbons to place on exhibits of their choice. Ribbons will be given to the exhibitor.

Workshops begin April 8th (11:30am-3pm)

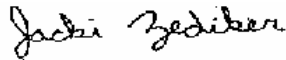
Exhibits MUST be picked-up between 3pm-4pm on Saturday, April 8th.

DIVISION	GRADES K-3	GRADES 4-6	GRADES 7-9	GRADES 10-12
Division 1 PAINTINGS (watercolor, acrylic)	CLASS 1	CLASS 2	CLASS 3	CLASS 4
Division 2 DRAWINGS (charcoal, pencil)	CLASS 5	CLASS 6	CLASS 7	CLASS 8
Division 3 PHOTOGRAPHY (color)	CLASS 9	CLASS 10	CLASS 11	CLASS 12
Division 4 PHOTOGRAPHY (black and white)	CLASS 13	CLASS 14	CLASS 15	CLASS 16
Division 5 NON-WEARABLE SEWING ITEM	CLASS 17	CLASS 18	CLASS 19	CLASS 20
Division 6 SEWING (garments)	CLASS 21	CLASS 22	CLASS 23	CLASS 24
Division 7 KNITTED OR CROCHETED	CLASS 25	CLASS 26	CLASS 27	CLASS 28
Division 8 WOODWORKING	CLASS 29	CLASS 30	CLASS 31	CLASS 32
Division 9 OTHER CRAFTS	CLASS 33	CLASS 34	CLASS 35	CLASS 36

For more information contact the 4-H Office, at 842-2711.

The University of California, in compliance with the Civil Rights Act of 1964, Title IX of the Education Amendments of 1972, and the Rehabilitation Act of 1973, does not discriminate on the basis of race, creed, religion, color, natural origin, sex or mental or physical handicap in any of its programs or activities, or with respect to any of its employment policies, practices or procedures. The University of California does not discriminate on the basis of age, ancestry, sexual orientation, marital status, citizenship, medical condition (as defined in section 12926 of the California Government Code), nor because individuals are disabled or Vietnam war veterans. Inquiries regarding this policy may be directed to the Director, Office of Affirmative Action, Division of Agriculture and Natural Resources, 300 Lakeside Drive, Oakland, California 94612-3550, (510) 987-0097

Issued in furtherance of Cooperative Extension work, Acts of May 8 and June 30, 1914, in cooperation with the U.S. Department of Agriculture, University of California



Jacki Zediker
4-H Youth Development
Program Representative



4-H WAY

This is your copy of the Siskiyou County 4-H Way. It is published to promote 4-H activities and participation. Your comments are invited.

*Cooperative Extension
University of California
1655 So. Main Street
Yreka, CA 96097*

Non-Profit
Standard Mail
Permit #3
Yreka, CA 96097

DATED MATERIAL